

www.indiratrade.com



MONDAY

CURRENCY COMMODITIES

**WEEKLY REPORT
24 DEC TO 28 DEC 2018**

EDGE



INDIRA SECURITIES PVT. LTD.



WEEKLY INDICES CHANGES

INDEX	CLOSE	PREV. CLOSE	Change (%)
SENSEX	35742.07	35962.93	-0.61%
NIFTY	10754	10805.5	-0.48%
DOW	22445.4	24100.5	-6.87%
NASDAQ	6333	6910.67	-8.36%
FTSE	6721.17	6845.17	-1.81%
NIKKEI	20166.2	21531.5	-6.34%
DAX	10633.8	10865.8	-2.14%
CAC	4694.38	4853.7	-3.28%

Market Round Up:

- **Forex - U.S. Dollar Rises, Yen Falls Despite Risk-off Sentiment:** -The U.S. dollar rose while the Japanese yen slipped on Friday even after Asian stocks and U.S. equities fell for a second day after the Federal Reserve hiked rates.
- **U.S. Stocks Fight Back at End of a Miserable Week: Markets Wrap:** - The pain across equity markets eased a little on Friday, with U.S. equities rising and European stocks erasing a drop. The dollar gained as Chinese policy makers signaled an easier monetary policy, and bonds retreated across Europe.
- **Treasuries rose, but European bonds fell ahead of the Christmas break.** The dollar climbed against the yuan and most major currencies after China's top policy makers said "significant" cuts to taxes and fees will be enacted in 2019, while signaling an easier monetary policy stance.
- **The U.S. Fed took the target range for its benchmark fund rate to 2.25-2.5% on Wednesday.** It reduced its 2019 median forecast for interest rates to 2.9% from a previous estimate of 3.1%, hinting at two rate hikes in 2019. That's below the three rate hikes previously indicated in the Fed's September projections.

RBI REFRANCE RATE

INDEX	CLOSE	PREV. CLOSE
USDINR	70.0368	71.7359
EURINR	80.2127	81.4628
JPYINR	62.8700	63.2000
GBPINR	88.7016	90.5809

FII FIGURES

DATE	FII FIGURES IN CRORE
17/12	-61
18/12	145
19/12	1209
20/12	-386
21/12	134
NET	+1041

DII FIGURES

DATE	DII FIGURES IN CRORE
17/12	-77
18/12	-183
19/12	-481
20/12	-88
21/12	-488
NET	-1317



DOLLAR INDEX CHART



1. **RSI:** 62.20
2. **ADX:** Indicating Sideways signal
3. **Stochastic Oscillator:** indicating Sideways signal
4. **ATR:** 1.19
5. **Moving averages:** Pair is trading above 50 and 100 Day simple moving averages..

USDINR TECHNICAL CHART (INDIAN RUPEE)



- 1) **RSI:** 79.39
- 2) **ADX:** Indicating positive signal
- 3) **Stochastic Oscillator:** indicating positive signal
- 4) **ATR:** 0.8760
- 5) **Moving averages :** Pair is trading above 50 and 100 Day simple moving averages..



DOMESTIC CURRENCY

Domestic	S2	S1	PIVOT	R1	R2
USDINR	70.58	71.32	71.96	72.7	73.34
EURINR	79.88	80.72	81.73	82.56	83.58
GBPINR	89.58	90.16	90.77	91.35	91.97
JPYINR	62.64	63.11	63.72	64.18	64.79

GLOBAL CURRENCY

Global	S2	S1	PIVOT	R1	R2
DOLLAR INDEX	95.81	96.62	97.16	97.97	98.51
EURUSD	1.12	1.12	1.13	1.14	1.15
GBPUSD	1.23	1.24	1.26	1.27	1.29
USDJPY	111.66	112.51	113	113.85	114.34

CURRENCY PERFORMANCE

CURRENCY	CLOSE PRICE	DAY	WEEK	MONTHLY	YEARLY
EURO	1.13894	0.17%	0.38%	0.49%	-3.95%
POUND	1.26742	0.45%	0.39%	-1.11%	-5.22%
AUSTRALIAN DOLLAR	0.70617	0.34%	-1.54%	-2.30%	-8.61%
NEWZEALAND DOLLAR	0.67418	1.08%	-0.84%	-0.39%	-4.20%
YEN	111.07	-0.12%	-1.56%	-1.61%	-1.90%
YUAN	6.90569	-0.24%	0.08%	-0.64%	5.59%
SWISS FRANC	0.99335	0.16%	0.06%	-0.50%	0.45%
CANADIAN DOLLAR	1.35702	-0.23%	1.25%	2.42%	6.95%
MEXICAN PESO	19.9015	0.01%	-0.84%	-3.47%	0.19%
INDIAN RUPEE	70.09	0.18%	-2.53%	-0.84%	9.50%
BRAZILIAN REAL	3.8987	1.48%	-0.47%	2.51%	17.75%
RUSSIAN RUBBLE	68.615	-0.42%	2.78%	4.61%	19.00%
DOLLAR INDEX	96.77	-0.18%	-0.34%	-0.18%	3.76%
KORREAN WON	1123.64	-0.48%	-0.40%	-0.46%	4.51%
SOUTH AFRICAN RAND	14.5081	0.96%	0.84%	5.54%	15.88%
SINGAPORE DOLLAR	1.37245	0.03%	0.00%	-0.21%	2.18%
HONGKONG DOLLAR	7.83022	0.02%	0.23%	0.09%	0.24%



FUNDAMENTAL OF COMMODITIES

MAJOR COMMODITIES

MCX ENERGY WEEKLY

Commodity	S2	S1	Pivot	R1	R2
Crude oil	3508.0	3599.0	3707.0	3798.0	3906.0
Natural Gas	234.2	255.1	295.3	316.2	356.4

MCX BASE METAL WEEKLY

Commodity	S2	S1	Pivot	R1	R2
Copper	427.8	434.7	441.3	448.2	454.8
Zinc	177.3	180.3	186.1	189.2	195.0
Lead	135.9	138.1	141.3	143.5	146.7
Nickel	762.5	776.7	784.8	799.0	807.1

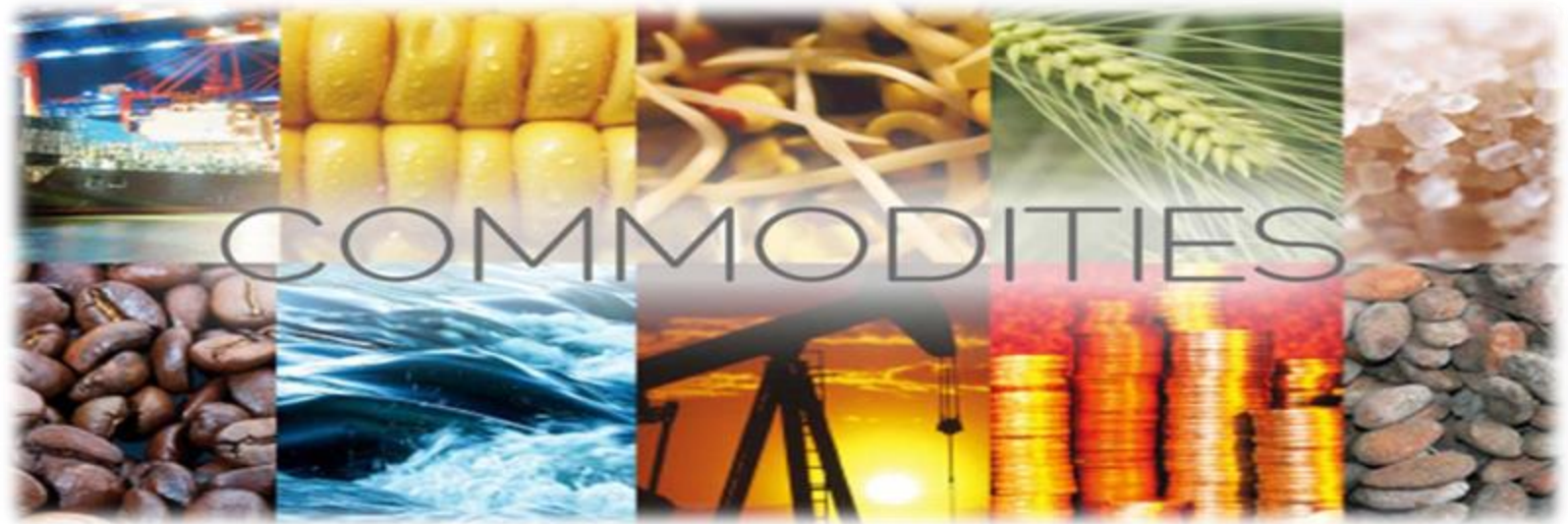
PRECIOUS METAL WEEKLY

Commodity	S2	S1	Pivot	R1	R2
Gold	31087.0	31320.0	31719.0	31952.0	32351.0
Silver	37178.0	37616.0	38138.0	38576.0	39098.0

International Commodity	S2	S1	Pivot	R1	R2	CMP	PREV CLOSE
Gold COMEX	\$1,225.00	\$1,233.00	\$1,245.00	\$1,253.00	\$1,265.00	\$1,268.00	\$1,241.00
SILVER COMEX	14.39	14.52	14.68	14.81	14.97	14.87	14.64
NYMEX CRUDE	48.77	49.99	51.74	52.96	54.71	45.88	51.2
BRENT CRUDE	57.66	58.98	60.66	61.98	63.66	54.73	60.3

Updates:

- Oil Prices Continue to Decline as Buying from Increased OPEC Cuts Fades: - Although oil prices bounced higher in overnight trade as OPEC said it would make deeper-than-expected quotas of its output cuts public, optimism faded in early morning trade on Friday as crude headed for the largest weekly decline in a month as concerns over weak economic growth and rising U.S. shale production outweighed hopes that the cartel could keep the global supply glut in check.
- Gold retreats from 6-month high, but set for big weekly gain: - Gold futures pulled back from a six-month high early Friday, but bullion was set to finish the week sharply higher, as a downturn in stocks — underpinned by the Federal Reserve’s policy message — helped to drive demand to so-called haven assets.



MAJOR COMMODITIES

Commodity Major	Price	Day	Weekly	Monthly	Yearly
Crude Oil	45.9985	1.51%	-7.78%	-8.84%	-23.30%
Brent	54.2906	1.65%	-8.92%	-8.20%	-18.99%
Natural gas	3.7967	3.36%	7.62%	-10.62%	43.65%
Gold	1263.05	1.10%	1.38%	3.34%	-1.57%
Silver	14.7233	0.60%	0.43%	3.48%	-10.96%
Platinum	786.9	-0.84%	-0.01%	-6.73%	-13.91%
Palladium	1231.5	-2.61%	-0.49%	6.81%	18.70%
Copper	2.6803	0.28%	-2.64%	-2.84%	-17.68%
Lead	1960.5	-0.53%	0.93%	-1.01%	-20.81%
Aluminum	1927	0.10%	-0.26%	-1.36%	-14.43%
Tin	19270	0.31%	-0.67%	0.16%	-2.16%
Zinc	2540	-0.04%	-1.01%	-1.09%	-22.22%



MCX GOLD CHART



Commodity	S2	S1	Pivot	R1	R2
Gold	31087.0	31320.0	31719.0	31952.0	32351.0

GOLD TECHNICAL INDICATOR	
RSI(14)	BUY
STOCH(9,6)	BUY
STOCHRSI(14)	BUY
MACD(12,26)	SELL
ADX(14)	SELL
Williams %R	NETURAL
CCI(14)	BUY
Highs/Lows(14)	BUY
Ultimate Oscillator	SELL
ROC	BUY
BUY	5
SELL	3
NEUTRAL	1
SUMMARY	MILD BULLISH

GOLD INTERNATIONAL CHART



Commodity	S2	S1	Pivot	R1	R2
Gold	\$1,225.0	\$1,233.0	\$1,245.0	\$1,253.0	\$1,265.0

GOLD INTERNATIONAL TECHNICAL INDICATOR	
RSI(14)	BUY
STOCH(9,6)	SELL
STOCHRSI(14)	BUY
MACD(12,26)	BUY
ADX(14)	BUY
Williams %R	BUY
CCI(14)	BUY
Highs/Lows(14)	BUY
Ultimate Oscillator	BUY
ROC	BUY
BUY	8
SELL	1
NEUTRAL	0
SUMMARY	STRONG BULLISH



MCX SILVER CHART



Commodity	S2	S1	Pivot	R1	R2
Silver	37178.0	37616.0	38138.0	38576.0	39098.0

SILVER TECHNICAL INDICATOR	
RSI(14)	SELL
STOCH(9,6)	BUY
STOCHRSI(14)	BUY
MACD(12,26)	SELL
ADX(14)	SELL
Williams %R	NEUTRAL
CCI(14)	SELL
Highs/Lows(14)	BUY
Ultimate Oscillator	SELL
ROC	SELL
BUY	3
SELL	6
NEUTRAL	1
SUMMARY	MILD BEARISH

SILVER INTERNATIONAL CHART



Commodity	S2	S1	Pivot	R1	R2
Silver	\$14.4	\$14.5	\$14.7	\$14.8	\$15.0

SILVER INTERNATIONAL TECHNICAL INDICATOR	
RSI(14)	SELL
STOCH(9,6)	BUY
STOCHRSI(14)	BUY
MACD(12,26)	BUY
ADX(14)	BUY
Williams %R	SELL
CCI(14)	SELL
Highs/Lows(14)	BUY
Ultimate Oscillator	SELL
ROC	SELL
BUY	5
SELL	5
NEUTRAL	0
SUMMARY	MILD BULLISH



MCX COPPER CHART



Commodity	S2	S1	Pivot	R1	R2
Copper	427.8	434.7	441.3	448.2	454.8

COPPER TECHNICAL INDICATOR

RSI(14)	SELL
STOCH(9,6)	BUY
STOCHRSI(14)	BUY
MACD(12,26)	SELL
ADX(14)	SELL
Williams %R	SELL
CCI(14)	SELL
Highs/Lows(14)	BUY
Ultimate Oscillator	SELL
ROC	SELL
BUY	3
SELL	7
NEUTRAL	0
SUMMARY	STRONG BEARISH

COPPER INTERNATIONAL CHART



Commodity	S2	S1	Pivot	R1	R2
Copper	\$2.7	\$2.7	\$2.8	\$2.8	\$2.8

COPPER INTERNATIONAL TECHNICAL INDICATOR

RSI(14)	SELL
STOCH(9,6)	BUY
STOCHRSI(14)	SELL
MACD(12,26)	BUY
ADX(14)	BUY
Williams %R	SELL
CCI(14)	SELL
Highs/Lows(14)	BUY
Ultimate Oscillator	SELL
ROC	SELL
BUY	4
SELL	6
NEUTRAL	0
SUMMARY	MILD BEARISH



MCX CRUDE CHART



Commodity	S2	S1	Pivot	R1	R2
Crude oil	3508.0	3599.0	3707.0	3798.0	3906.0

BRENT CRUDE OIL TECHNICAL INDICATOR	
RSI(14)	SELL
STOCH(9,6)	BUY
STOCHRSI(14)	BUY
MACD(12,26)	SELL
ADX(14)	SELL
Williams %R	SELL
CCI(14)	SELL
Highs/Lows(14)	BUY
Ultimate Oscillator	SELL
ROC	SELL
BUY	3
SELL	7
NEUTRAL	0
SUMMARY	STRONG BEARISH

NYMEX CRUDE CHART



Commodity	S2	S1	Pivot	R1	R2
Crude oil	\$48.8	\$50.0	\$51.7	\$53.0	\$54.7

CRUDE.OILNYM TECHNICAL INDICATOR	
RSI(14)	SELL
STOCH(9,6)	BUY
STOCHRSI(14)	BUY
MACD(12,26)	SELL
ADX(14)	SELL
Williams %R	SELL
CCI(14)	SELL
Highs/Lows(14)	BUY
Ultimate Oscillator	SELL
ROC	SELL
BUY	3
SELL	7
NEUTRAL	0
SUMMARY	STRONG BEARISH



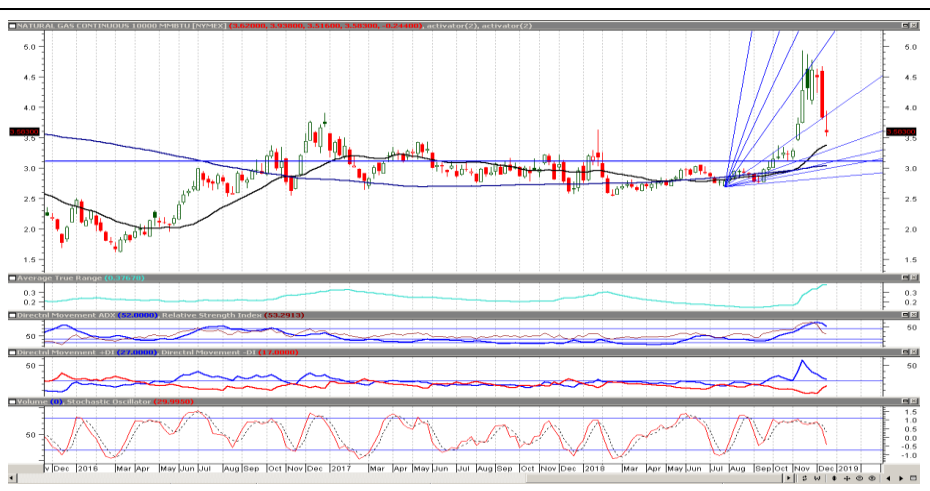
MCX NATURAL GAS



Commodity	S2	S1	Pivot	R1	R2
Natural Gas	234.2	255.1	295.3	316.2	356.4

NATURALGAS TECHNICAL INDICATOR	
RSI(14)	BUY
STOCH(9,6)	SELL
STOCHRSI(14)	SELL
MACD(12,26)	BUY
ADX(14)	BUY
Williams %R	NETURAL
CCI(14)	SELL
Highs/Lows(14)	BUY
Ultimate Oscillator	SELL
ROC	BUY
BUY	4
SELL	4
NEUTRAL	1
SUMMARY	NETURAL

NATURAL GAS INTERNATIONAL



Commodity	S2	S1	Pivot	R1	R2
Natural Gas	\$3.2	\$3.5	\$4.1	\$4.4	\$5.0

NATURAL GAS INTER. TECHNICAL INDICATOR	
RSI(14)	BUY
STOCH(9,6)	SELL
STOCHRSI(14)	SELL
MACD(12,26)	BUY
ADX(14)	SELL
Williams %R	NETURAL
CCI(14)	BUY
Highs/Lows(14)	BUY
Ultimate Oscillator	SELL
ROC	BUY
BUY	4
SELL	4
NEUTRAL	1
SUMMARY	NETURAL



204 Amardarshan Building 3rd floor Saket Nagar , Indore-452018

Call: 0731-4797170-173 **Mob:** +91-9303172345 / **Toll Free:** 18001030059 / **SMS:** <INDIRA> to 56070

DISCLAIMER

This report is for private circulation within the Indira Group. This report is strictly confidential and for information of the selected recipient only and may not be altered in any way, transmitted to, copied or distributed, in part or in whole, to any other person or to the media or reproduced in any form. This report should not be construed as an offer or solicitation to buy or sell any securities or any interest in securities. It does not constitute a personal recommendation or take into account the particular investment objectives, financial situations, or any such factor. The information, opinions, estimates and forecasts contained here have been obtained from, or are based upon, sources we believe to be reliable, but no representation of warranty, express or implied, is made by us to their accuracy or completeness. Opinions expressed are our current opinions as of our current opinions as of the data appearing on this material only and are subject to change without notice.